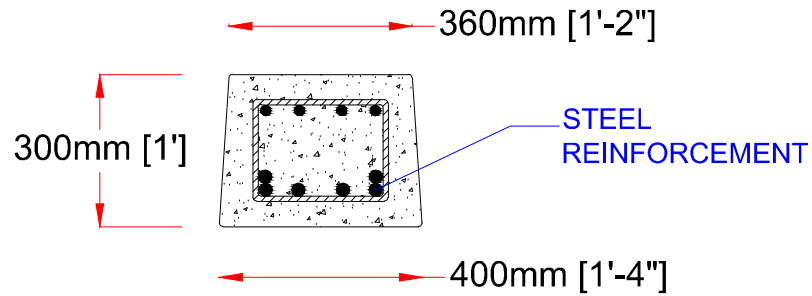
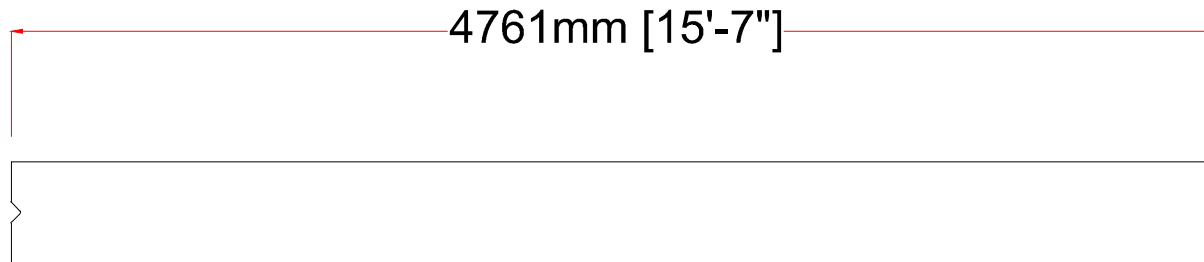


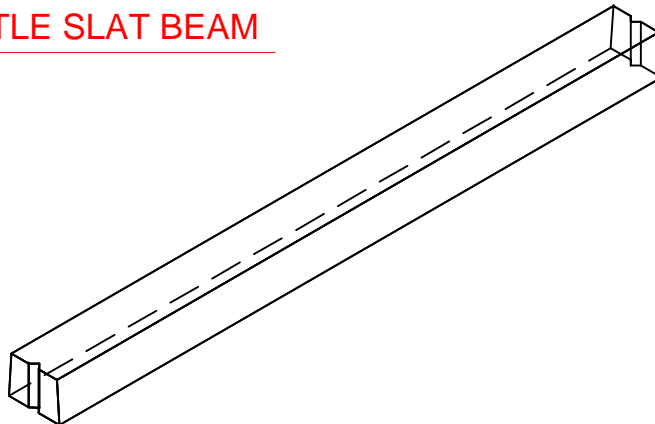
## CROSS SECTION



## ELEVATION



## 3D VIEW OF CATTLE SLAT BEAM



## NOTE

1. Do not scale, use figured dimensions only.
2. All dimensions in metric and imperial units.
3. Precast column setary to concrete floor by holding pins
4. Concrete grade to be C45 U.N.O
5. Minimum 40 mm cover to all steal.
6. All steel to be S275 J0 to BS EN 10025
7. Lifting pin located on top of column
8. All setting Out & Dimensions to be checked on site.
9. Installation and maintained should follow best practice.

## SUMMARY

Beam Length can range from 1000mm to 4770mm.

Name: Precast beam element

Type: Agriculture beam

Dimension; Height 300mm, Base width 400mm and Top section 380mm.

Issue 2	Revised for Audit	
Issue 1	Construction	31-July-2012

Client	N/B	Scale Checked N/B
Drawing Title	Details	Dwg No. 1101/Beam Drawn CMcE

Project Description	Drawing & issue notes to be read in conjunction with issue sheet. © This Drawing is Copyright
Precast Concrete Beam	



### Croom Concrete Ltd

Off Church Road,  
Croom,  
Co Limerick,  
Tel: 061 397479  
Fax: 061 660719  
e-mail:  
sales@croomconcrete.ie